

From Europe's Biggest Harbour to the Countryside

7 days, € 870



Introduction



Start this tour in the modern city of Rotterdam, voted 5th in the top 10 'world top cities' (Lonely Planet's Best in Travel 2016) Leaving the skyscrapers and port cranes of Rotterdam behind you, plunge into tranquil countryside. The far horizons give you a feeling of peace, space and freedom.

You will visit the old town of Dordrecht with its picturesque harbour quarter. Next you will head south to Willemstad, a former garrison town inside star-shaped fortifications. The next day enter Zeeland province, mainly made up of islands.

Day to Day

Day 1 **Arrival in Rotterdam**

Arrival in Rotterdam

Day 2 **Rotterdam - Willemstad**

66 km

Firstly from Rotterdam to Kinderdijk. With all its pitoresque windmills. Pedalling on, you will reach one of the oldest towns in Holland: Dordrecht, completely surrounded by water. The area around the marina is a true gem. This oldest part of town counts over a thousand historical buildings and three nostalgic canals. Round off the day in Willemstad, a fortified town shaped like a seven-point star.

Day 3 **Willemstad - Noordgouwe (Zierikzee)**

50 km

Make your way across the isle of Goeree Overflakkee amid a mosaic landscape of rectangular polders, rolling dunes and golden sand flats. A bridge will take you across Grevelingenmeer Lake back to the isle of Schouwen Duiveland. In mussel town Bruinisse, "the Gateway to Zeeland", look around the fishing harbour or stroll over to the attractive marina. Back in the saddle, pedal on to the historical town of Zierikzee, a real gem, situated on the Oosterschelde estuary. The street plan is medieval and meandering, the historical buildings number over 500, the impressive marina is well worth a visit. Don't forget to treat yourself to a Zeeland delicacy: "Zeeuwse bolus" (pastry with syrup and cinnamon -sometimes buttered) or "Schouws palingbroodje" (a bread roll stuffed with smoked eel). If you want to delve into local history, do explore the Maritime Museum revealing all on Zierikzee's glorious (notorious?) seafaring and trading past.



Day 4 Noordgouwe (Zierikzee) - Burgh Haamstede**48 km**

Oosterschelde National Park is an estuarine tidal habitat. Tidal flats are submerged by seawater at high tide and re-emerge at low tide covered in food for water birds. They are also a favourite resting place for seals. Flora and fauna in and around the Oosterschelde adapt to both freshwater from the rivers and salty seawater. Today you will cross the Oosterschelde on Zeelandbrug Bridge to the isle of Noord-Beveland. It's like entering a different world. Few tourists have made it this far! Cycling west, past fields and pastures and through tiny villages, you will reach world famous Oosterscheldekering. This is the Storm Surge Barrier, the largest, most ingenious and expensive of the Delta Works. Nine km long, connecting Noord-Beveland to Schouwen-Duiveland, initially it was planned as a closed dam. But under pressure from the fishing lobby and environmentalists, sixty-two big sliding sluice gates were installed in the dam. These steel doors are nearly always open, allowing sea water to pass thus safeguarding Oosterschelde's saltwater ecosystem. They close only when sea levels are expected to rise more than three meters. Halfway across the barrier, on an artificial island, lies Delta Park "Neeltje Jans", Zeeland's number one tourist attraction, built around the Delta Expo. It offers illuminating insights into the Delta Works, why they were necessary, how they protect our coastline and relative environmental matters. But there's more: a water theme park with a playground, an amazing waterslide, saltwater aquarium, sea lion show and more... Back on the isle of Schouwen-Duiveland, you will cycle through the tranquil woods of "Kop van Schouwen" nature reserve.

Day 5 Burgh Haamstede - Brielle**50 km**

Twenty-one kilometres of the Netherlands' most pristine coastline await you this morning. Pedalling up the beautiful coast of Schouwen-Duiveland island, you will enjoy bright white beaches and rolling dunes. The Delta Works, a series of thirteen sea barriers, sluices and dams all down the coast of Zeeland were constructed to protect the low-lying hinterland from flooding. But it also dramatically improved infrastructure in the region. Brouwers Dam and Haringvliet Dam are part of the Delta Works and will take you across to the next two islands on today's route. Ride atop the dams with the sea to your left and lakes on your right. You will end the day in the town of Brielle. The star-shaped fortifications (including moat, canals, ramparts, bastions) have been lovingly restored and the 400+ listed buildings are a sight to behold.

Day 6 Brielle - Rotterdam**37 km**

Today's cycling distance is short, which means you will have plenty of time to explore the bustling city of Rotterdam.

Day 7 Return Home

After breakfast at your hotel, it's time to go home.



Prices, Data, Booking

Starting dates:

Thursday until Tuesday from April 1 till September 24.

Price pp		€
Double room, breakfast		865.00
Single room, breakfast		1,345.00
Extra night double room, breakfast only		80.00
Upgrades pp/night		€
Fletcher Strandhotel Haamstede, Burgh Haamstede		25.00
Hotel Mondragon, Zierikzee		0.00
Rental bike		€
Child bike		66.00
Hybrid		78.00
E-bike		168.00
Extra services		€
Bike Breakdown pass	€ 4.00 x 6	24.00
Child seat	€ 5.00 x 6	30.00
Bike theft insurance	€ 3.00 x 6	18.00
E-bike theft insurance	€ 6.00 x 6	36.00
Extra luggage	€ 5.00 x 6	30.00
Tag-along bike	€ 10.00 x 6	60.00
Child trailer	€ 18.00 x 6	108.00
Bike helmet	per piece	10.00
SGR	per piece	5.00
discount	per piece	-20.00

Starting point:

Rotterdam or Burgh Haamstede



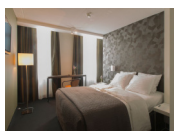
Accommodation

The hotels or B&Bs on this trip have been carefully selected for their location, atmosphere and/or unique services. All rooms are en-suite. A list of the hotels we work with appears below. If a certain accommodation is unable to confirm due to lack of availability, we will request a comparable alternative. When selecting the accommodation, we try to take into account as much as possible a safe and closed bicycle shed. However, we cannot do this with all of them guarantee and this partly depends on the number of bicycles of other guests.



NH Hotel Atlanta Rotterdam ** (Rotterdam)**

www.nh-hotels.com/nl/hotel/nh-atlanta-rotterdam



Hotel Mauritz * (Willemstad)**

www.mauritzwillemstad.nl



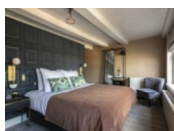
Hotel Mondragon (Zierikzee)

www.mondragon.nl



Fletcher Duinhotel Burgh Haamstede ** (Burgh Haamstede)**

www.duinhotelburghhaamstede.nl



Boutique Hotel Poorter ** (Brielle)**

www.poorterhotel.nl



Practical Info



6 Nights included



3/4 Star Hotels



Breakfast included



Detailed roadbooks with maps and tourist information



The possibility of renting our bikes



7-days a week service-hotline



Luggage transport to your next hotel



Rotterdam. For more information:
[ns.nl/reisplannen](https://www.ns.nl/reisplannen)



Parking possibilities at the hotel



Any ferry crossings are not included

Arrival info



Nearest Airport are Rotterdam The Hague Airport (RTM) or Amsterdam Airport Schiphol (AMS)



From Rotterdam The Hague Airport you should take the bus and metro to reach the hotel. For timetables and tickets:
www.9292.nl/en.

The train from Schiphol to Rotterdam departs 4 times per hour. Travel time is about 2 hours. A single ticket costs approx
€15,- per person excl. bicycle.

For timetables and tickets, go to www.ns.nl/en.

From Rotterdam trainstation you should take a metro and bus to reach the hotel. For metro and bus details, how to reach
the hotel, check : www.9292ov.nl/en.

