

## Cheese and Coasts Tour

9 days, € 1150



### Introduction



Visit two "cheese towns" on this tour. Both Gouda (Thu) and Alkmaar (Fri) have traditional cheese markets. Also, two coasts feature on this tour. Firstly, you will explore the coast of former Zuiderzee. An exhibition in Lelystad explains how this sea was made into Lake IJsselmeer and partly drained to make Flevopolder. In Holland's Golden Age, Hoorn, Enkhuizen and Harderwijk were prosperous trading towns on the Zuiderzee.

### Day to Day

#### Day 1 **Arrival in Utrecht/Bunnik**

Arrival in Utrecht.

#### Day 2 **Utrecht/Bunnik - Harderwijk**

**61 km**

Today's scenery of woods, water and polder will enchant you. Hidden away in the woods you'll find a famous pancake inn, a castle where Queen Beatrix will return to live when she retires and a palace where Juliana and Bernhard lived. Along the shores of Randmeren lakes you'll reach Harderwijk which used to be a prosperous port but is now no longer by the sea!

#### Day 3 **Harderwijk - Enkhuizen**

**61 km**

Cycle through the woods and farmland of Flevopolder to Lelystad, where you can visit an exhibition on how the polder came to be. Cross Lake IJsselmeer atop a 32 km dike from Lelystad to Enkhuizen. You will see our Golden Age reflected in the historical buildings of pretty Enkhuizen. Don't miss the excellent Zuiderzee Museum!



- Day 4 **Enkhuizen - Alkmaar** **59 km**  
After looking around pretty Hoorn, which made its fortune trading in the Golden Age, you will set off on today's coast-to-coast bike route from Lake IJsselmeer to the North Sea. You will pass by Holland's oldest polder, Beemster, drained by windmills in 1612(!). You can also visit an interesting "museum windmill" as well as cheese town Alkmaar -the market is on Fridays.
- Day 5 **Alkmaar - Zandvoort** **57 km**  
The sandy beaches of the North Sea are backed by dune systems that safeguard the hinterland from the sea. Today you will cycle through a Dune Reserve and a National Park that protect the many species of dune flora and fauna. Cross the North Sea Canal by ferry. Zandvoort is a well-known seaside resort.
- Day 6 **Zandvoort - Scheveningen/The Hague** **43 km**  
Behind the dunes, get the camera out again for the multicoloured bulb fields (daffodils, hyacinths and tulips). On the coast, check out the resorts and beaches which each attract their own crowd. When you arrive in lively Scheveningen with its famous Kurhaus and busy seafront, choose one of many attractions to visit in the afternoon.
- Day 7 **Scheveningen/The Hague - Gouda** **63 km**  
The Hague, our seat of government, is brimming with things to do and see. Our pick: Vermeers "Girl with a Pearl Earring in Mauritshuis Museum and Mesdags tranquil "Panorama of Scheveningen. The route goes through the green heart of Holland via Bodegraven to the beautiful Gouda.
- Day 8 **Gouda - Utrecht/Bunnik** **50 km**  
The landscape of rivers, polders, lakes, woods, parks and marshy fens makes for a wonderful bike trip. You will see stately homes and castles along the way. You pass through the capital of the Green Heart: Woerden. A picturesque fortified town with its cheese warehouses and farmers' markets. The lively centre of the big city of Utrecht will draw you to its peaceful inner city canals and characteristic wharves, unique to Utrecht. Explore the pretty Museum Quarter, or go (window) shopping on some of the quieter shopping streets.
- Day 9 **Return Home**  
After breakfast in your hotel, you will return home.



## Prices, Data, Booking

### Starting dates:

Daily from April 1 till September 22.

<b>Price pp</b>		<b>€</b>
Double room, breakfast		1,140.00
Single room, breakfast		1,740.00
Extra night double room, breakfast only		110.00
<b>Upgrades pp/night</b>		<b>€</b>
Hotel Mitland, Utrecht		40.00
Relais & Châteaux Weeshuis Gouda, Gouda		100.00
<b>Rental bike</b>		<b>€</b>
Child bike		88.00
Hybrid		104.00
E-bike		224.00
<b>Extra services</b>		<b>€</b>
Bike Breakdown pass	€ 4.00 x 8	32.00
Child seat	€ 5.00 x 8	40.00
Bike theft insurance	€ 3.00 x 8	24.00
E-bike theft insurance	€ 6.00 x 8	48.00
Extra luggage	€ 5.00 x 8	40.00
Tag-along bike	€ 10.00 x 8	80.00
Child trailer	€ 18.00 x 8	144.00
Bike helmet	per piece	10.00
SGR	per piece	5.00
discount	per piece	-25.00
Giving back to nature	per piece	5.00

### Starting point:

Utrecht, Bunnik or Harderwijk



## Accommodation

The hotels or B&Bs on this trip have been carefully selected for their location, atmosphere and/or unique services. All rooms are en-suite. A list of the hotels we work with appears below. If a certain accommodation is unable to confirm due to lack of availability, we will request a comparable alternative.

When selecting the accommodation, we try to take into account as much as possible a safe and closed bicycle shed. However, we cannot do this with all of them guarantee and this partly depends on the number of bicycles of other guests.



### **Hotel Mitland \*\*\*\* (Utrecht)**

[www.mitland.nl](http://www.mitland.nl)



### **Best Western Hotel Baars \*\*\*\* (Harderwijk)**

[www.hotelbaars.nl](http://www.hotelbaars.nl)



### **Hotel Restaurant Die Port van Cleve \*\*\* (Enkhuizen)**

[www.deportvancleve.nl](http://www.deportvancleve.nl)



### **Grand Hotel Alkmaar \*\*\*\* (Alkmaar)**

[www.grandhotelalkmaar.nl](http://www.grandhotelalkmaar.nl)



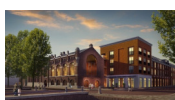
### **Palace Hotel Zandvoort \*\*\*\* (Zandvoort)**

[www.palace-hotel.nl](http://www.palace-hotel.nl)



### **Boulevard Hotel \*\*\* (Scheveningen)**

[www.boulevardhotel.nl](http://www.boulevardhotel.nl)



### **City Hotel Gouda \*\*\*\* (Gouda)**

[www.cityhotelgouda.com](http://www.cityhotelgouda.com)



## Practical Info



8 Nights included



3/4 Star Hotels



Breakfast included



Detailed roadbooks with maps and tourist information



The possibility of renting our bikes



7-days a week service-hotline



Luggage transport to your next hotel



CS Utrecht. For more information:  
[ns.nl/reisplannen](http://ns.nl/reisplannen)



Parking possibilities at the hotel



Any ferry crossings are not included

## Arrival info



Nearest Airport is Amsterdam Airport Schiphol (AMS)



The train from Schiphol to Utrecht departs 4 times per hour. Travel time is about 30 minutes. A single ticket costs approx €10- per person excl. bicycle.

For timetables and tickets, go to [www.ns.nl/en](http://www.ns.nl/en). For bus details, how to reach the hotel, check: [www.9292.nl/en](http://www.9292.nl/en).

